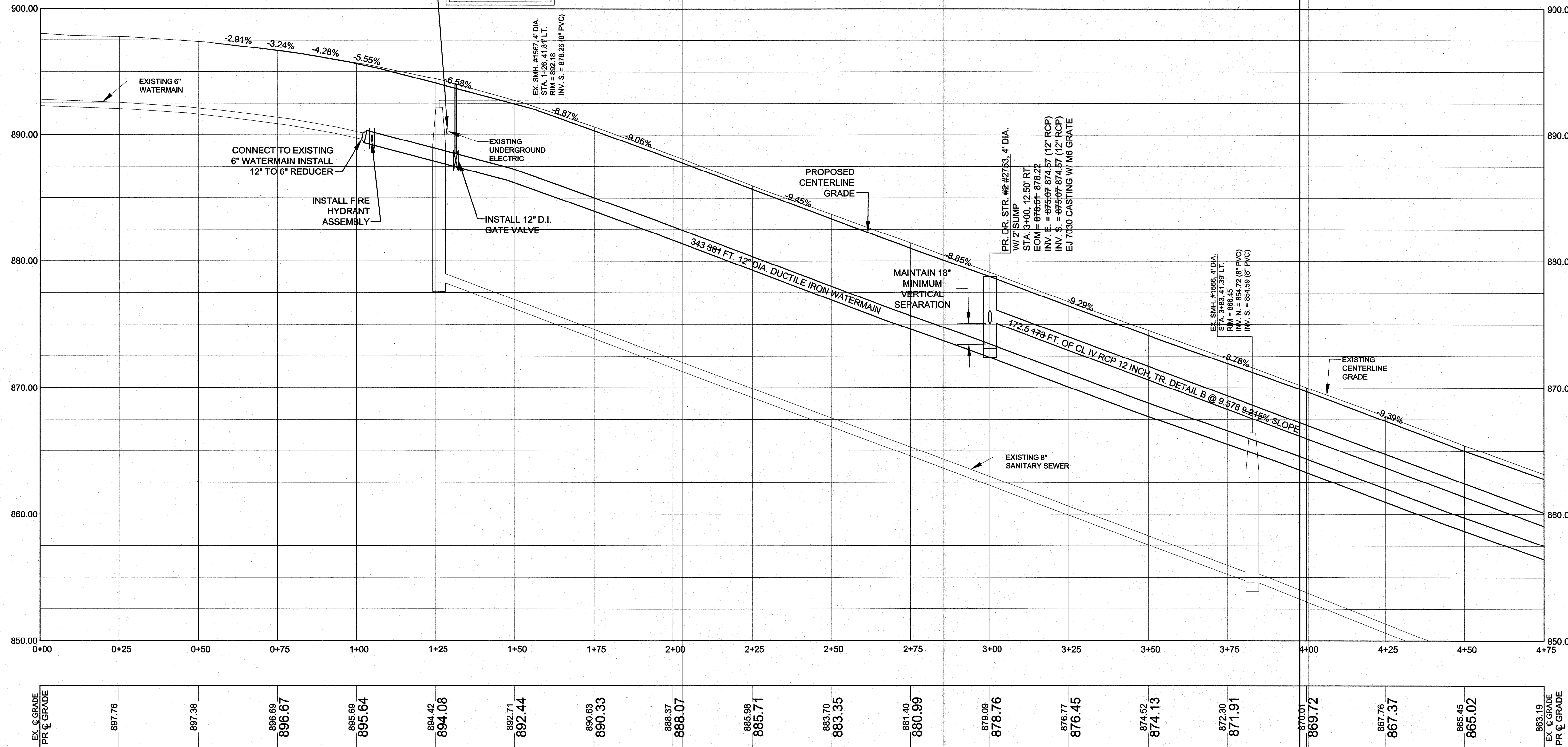
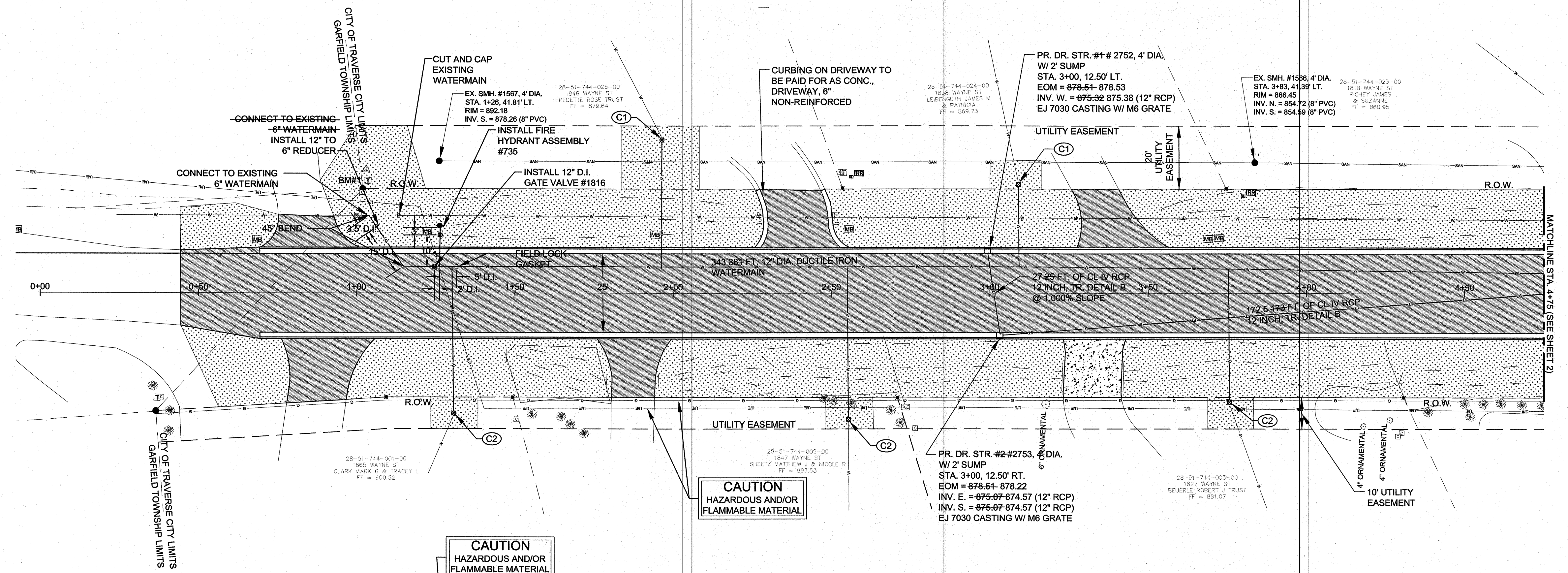
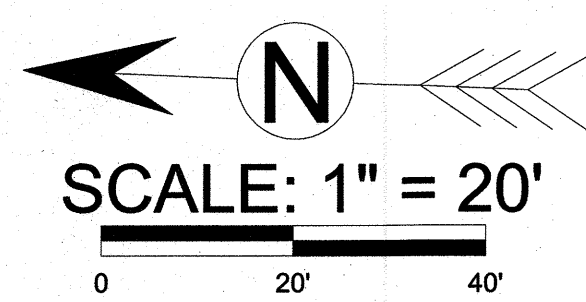


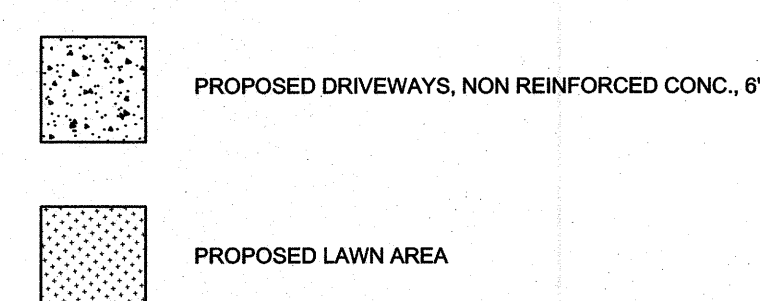
# WAYNE STREET (66' R.O.W.)



SCALE: H, 1" = 20' ; V, 1" = 5'



## HATCH LEGEND



## LEGEND

- FOUND PROPERTY CORNER
- BENCHMARK
- SIGN
- GAS BOX
- UTILITY POLE
- GUY WIRE
- WATER VALVE
- PED LIGHT POLE
- ELECTRIC RISER
- TELEPHONE RISER/BOX
- FIRE HYDRANT
- CATCHBASIN
- BEEHIVE GRATE CATCHBASIN
- STORM MANHOLE
- SANITARY MANHOLE
- DECIDUOUS TREE
- CONIFEROUS TREE
- TREE LINE
- SHRUB LINE
- OVERHEAD ELECTRIC
- UNDERGROUND ELECTRIC
- OVERHEAD TELEPHONE
- UNDERGROUND TELEPHONE
- OVERHEAD CABLE TV
- UNDERGROUND CABLE TV
- SANITARY SEWER
- STORM SEWER
- WATERMAIN
- GUARDRAIL
- FENCE
- TOP/BOTTOM OF SLOPE

BENCHMARK DATA  
BENCHMARK # 1  
TOP OF "A" ON  
HYD. #735  
ELEV. = 897.38

The City of Traverse City  
Engineering Department  
GOVERNMENTAL CENTER  
400 Boardman Avenue  
Traverse City, Michigan 49604

### CITY OF TRAVERSE CITY

## 2013 PAVING AND RESURFACING PROJECTS

### PLAN AND PROFILE SHEET

Revision/Issue	Date
PERMIT SET	7-01-13
BID SET	7-16-13
AS-BUILT	11-25-13
JLC	

Date: 7-01-13

Project No.: 2013-03

Drawn by: JDM

Scale: 1" = 20'

Sheet No.: 1 OF 4